

# Cadillac

The choice of 1976



*Whatever you want in a luxury car ...*





# Cadillac has it.



## IN KINDS OF CARS.

You can select from ten basic Cadillac models, represented by those shown right: (foreground) Coupe deVille in Crystal Blue Firemist with an available White Cabriolet roof; (right foreground) Fleetwood Brougham in Chesterfield Brown with an Ivory padded vinyl roof; (left center) Seville by Cadillac in Georgian Silver with a matching Silver padded vinyl top; (right center) Eldorado Coupe in Phoenician Ivory with a matching padded vinyl roof; and (background) Calais Sedan in Claret.

The first luxury of Cadillac is, of course, the luxury of choice.

**Family size luxury.** Sedan deVille, Coupe deVille, Calais Sedan and Calais Coupe.

**Personal size luxury.** Eldorado Coupe, Custom Cabriolet and Eldorado Convertible (the last convertible to be built in America).

**International size luxury.** Seville by Cadillac.

**Executive size luxury.** Fleetwood Brougham, Cadillac Limousine and the Nine-Passenger Sedan.

**Special Editions.** Fleetwood Talisman, Brougham d'Elegance, DeVille d'Elegance. And DeVille Cabriolet.

## IN COMFORT AND LUXURY.

Cadillac for '76. You don't pamper it. It pampers you. Whatever size...whatever model you choose. Because every Cadillac comes equipped with Cadillac comfort, convenience and luxury. If anything, carried to a new level of sophistication in 1976 by a number of refinements. Seen and unseen. From a new available feature that automatically locks doors when the shift lever is moved to "Drive"...to a Freedom™ Battery that never needs water. For Cadillac 1976, the emphasis is on changes and refinements that enhance customer value.

## IN ENGINEERING ADVANCEMENTS.

Every Cadillac proudly displayed on these pages incorporates American automotive engineering advancements that, in some cases, have long since been taken for granted. A case in point: Cadillac's Variable Ratio Power Steering. Infinitely variable, it automatically changes ratios to adjust to your changing driving situation. Result: easier parking and cornering while retaining the feel of the highway at cruising speeds.

Of course, one of the most exciting engineering advancements in years involves Cadillac's Electronic-Fuel-Injected Engines. Available on all Cadillac models except Nine-Passenger Sedan and Limousine (a 5.7 Litre, EFI Engine is standard on Seville), they are designed to provide efficiency over a wide variety of driving conditions and driver habits. With quick response. Fast starting. Consistent performance. Smooth engine idle. And few required maintenance operations.

## IN TOTAL CADILLAC VALUE.

It all comes down, in one way or another, to Total Cadillac Value. That's the value inherent in every 1976 Cadillac...when you buy it...when you drive it...and when you trade it. Total Cadillac Value is the sum total of everything that makes a Cadillac a Cadillac.

And that includes—not only the roominess, comfort and elegance of Cadillac itself—but also other equally important considerations. Such as Cadillac's resale value—consistently the highest of all U.S. luxury car makes. Plus some things you can't put a dollar-figure on. Like the good feeling in knowing you and your family are riding in a Cadillac.

Small wonder Cadillac repeat ownership is consistently the highest of any U.S. luxury car make.

# The Fleetwood Brougham

EXECUTIVE SIZE LUXURY.

With its individually longer wheelbase (three inches longer than Sedan deVille)...with its stately beauty that is both spirited and dignified...with its roominess and refinements for 1976, this is indeed one of the world's great sedans. The ride: superb. Luxury abounds. With such features standard

as Cadillac's Signal-Seeking AM/FM Stereo Radio. From its jewel-like stand-up wreath and crest to its impressive new tail lamps, this is spaciousness and luxury in the Cadillac manner. With such touches as carpeted footrests and individual reading lights.

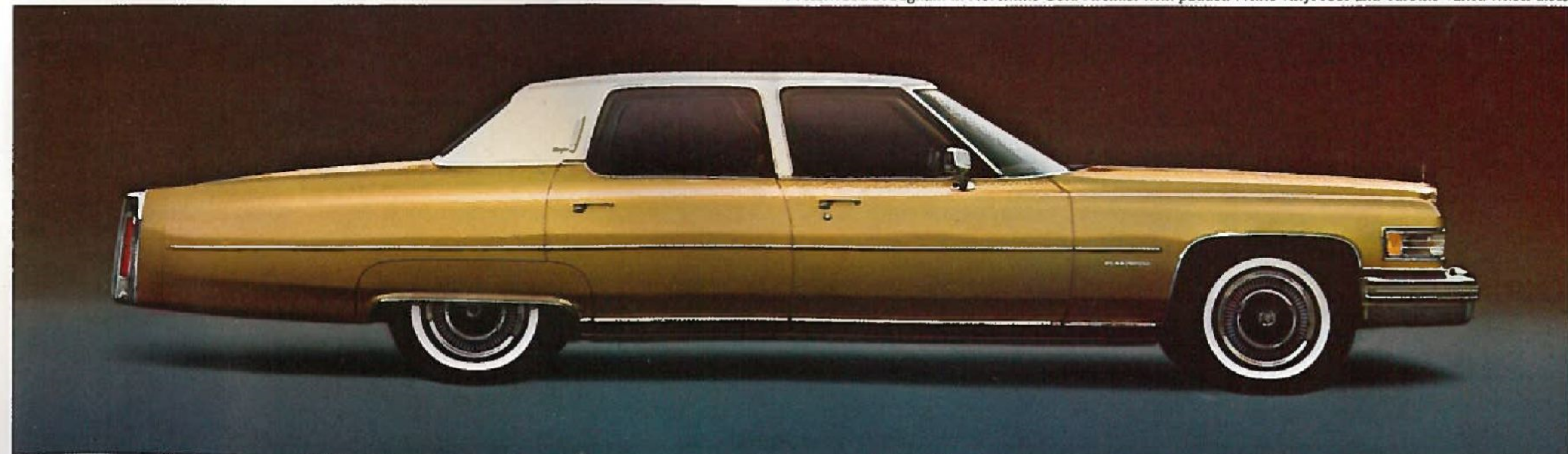
The tailored look! It's new for 1976 and completely in character with Fleetwood Brougham. One expression of it is in Minoa, a handsome new ribbed velour with leather bolsters. It is shown below in Light Ivory-Gold and available in Light Gray and Dark Blue. Another is Mansion, a

smooth-finish material of understated elegance. It is available in Black, Dark Blue-Green, Light Gray, Dark Blue and Light Buckskin. Or, if you prefer, you may order soft, supple, Sierra grain leather in any of 11 trim combinations. Standard for 1976 are Cadillac's Dual Comfort 60/40 front seats with

center fold-down armrest. You may specify Cadillac's Electronic-Fuel-Injected Engine, Weather Band Radio, Astrorooftop, Opera Lamps, Illuminated Entry System, Lighted Vanity Mirror and many other features to individualize your 1976 Fleetwood Brougham even further.



The Fleetwood Brougham in Florentine Gold Firemist with padded White vinyl roof and Turbine Vaned wheel discs.



# The Eldorado Coupe

PERSONAL SIZE LUXURY.

Here is one of the world's most exciting cars . . . the only American luxury car with front-wheel drive . . . four-wheel disc brakes . . . and choice of coupe or convertible. And to accent that great profile for 1976 are luxury wheel discs with a jewel-like wreath and crest on a field of black. But

the most rewarding Eldorado experience occurs behind the wheel — as you feel the traction and maneuverability of front-wheel drive (especially on slippery road surfaces). As well as the added front seat roominess it provides. Standard features even include an AM/FM Signal-Seeking Stereo Radio.



Inside, as well as out, you see the combination of sportiness and luxury that is Eldorado. In such details as the unique, carved gunstock design of its simulated wood instrument panel insert. And in the choice of materials for 1976. There's Mansion Knit, a rich, smooth-finish material available in Dark

Blue, Light Ivory-Gold, Light Buckskin and Black, as shown. Or select the Merlin Plaid in either Dark Blue-Green or Dark Firethorn. Also available is soft Sierra grain leather in any of 11 trim combinations. To the host of features that are standard on Eldorado, you may add Cadillac's Electronic-Fuel-

Injected Engine, AM/FM Signal-Seeking Stereo Radio with a 24-hour weather band, our Astrorof and 50/50 Dual Comfort front seats with a power recliner and 6-way power seat adjuster for the passenger side. Cadillac Eldorado for '76. Luxury, comfort and convenience in a personal size car.



The Eldorado Coupe in Georgian Silver with available Silver Cabriolet vinyl roof.



# The Eldorado Convertible

LAST OF THE BREED.

This is more than one of the finest convertibles ever built. It is the only convertible now built in America—and it will not be repeated in 1977. You could say that Cadillac saved the best till last . . . because this is a magnificent automobile. With its ingenious inward-folding top that provides full-

width seating for rear passengers. With its unique combination of front-wheel drive and four-wheel disc brakes. With a host of standard features that include an AM/FM Signal-Seeking Stereo Radio, Automatic Climate Control and Automatic Level Control.



The richness of soft and supple Sierra grain leather is standard, of course. Here shown in White with Dark Firethorn carpeting. Other combinations include White with Black, White with Dark Blue, White with Dark Blue-Green, Antique Light Gray, Black, Antique Light Blue, Antique Dark Blue-

Green, Light Ivory-Gold, Antique Light Buckskin and Antique Dark Firethorn. Convertible tops are available in Black, Ivory, White, Buckskin, Dark Blue, Firethorn and Dark Blue-Green. Tying in are 21 exterior colors (thirteen new for 1976)—with accent stripes available in eight colors. Available is

a hard boot for the convertible top. Other features available include: Cruise Control, Cadillac's Electronic-Fuel-Injected Engine and 50/50 Dual Comfort front seats with individual fold-down armrests, and you can specify a power recliner and 6-way power seat adjuster for the passenger side.



The Eldorado Convertible in Firethorn with a White Leather interior.



# The Seville

INTERNATIONAL SIZE LUXURY.

Timeless in styling. Cadillac in craftsmanship. Seville is designed to be one of the finest production cars built anywhere in the world. Responsive—Cadillac's Electronic-Fuel-Injected, 5.7 Litre Engine is standard. Maneuverable. Easy to park. Quiet. Smooth of ride. And efficient. In EPA

mileage tests, Seville got 21 miles per gallon in the highway test and 15 miles per gallon in the city test. (For California figures, see your Cadillac Dealer.) About 25 inches shorter than full-sized U.S. luxury cars, it has about the same overall height for interior roominess and comfort.

Here is one of the world's best equipped cars. Standard features range from a Fuel Monitor System to Cadillac's AM/FM Signal-Seeking Stereo Radio with Automatic Power Antenna . . . from Automatic Climate Control to Automatic Level Control. Interiors are understated. Tasteful. And so very

comfortable; the kind of comfort you would expect of Cadillac. A wide choice of trims is available. Shown below in Dark Blue is Mansion Knit, a smooth-finish material that whispers elegance. Or choose from any of six other colors—Light Gray, Black, Dark Blue-Green, Light Ivory-Gold, Light

Buckskin or Dark Firethorn. Or, if you prefer, select soft, supple, Sierra grain leather available in White, Antique Light Blue, Antique Dark Blue-Green, Black, Light Ivory-Gold, Antique Light Buckskin, Antique Dark Firethorn or Antique Light Gray.



The Seville by Cadillac in Innsbruck Blue with Silver Blue Metallic padded vinyl roof.



# The Sedan de Ville

FAMILY SIZE LUXURY.

There are many reasons why the DeVilles are perennially among America's most popular luxury cars. Start with four-door Cadillac roominess and comfort. Add to that DeVille elegance...and ride. And long-lasting value. This year, there's even more. New convenience features that

are standard...the Freedom™ Battery that never needs water is just one. And new features you may specify...such as door locks that automatically lock when you place the shift lever in "Drive", a Fuel Monitor System, Cruise Control and Sunroof.



The supple leather interiors available on Sedan deVille are as rich and as comfortable as they look. The one featured below is Antique Light Buckskin, which is just one of 11 leather trim combinations available. Sedan deVille for '76 also offers a new ribbed knit material called Magnan that is as

attractive to the touch as it is to the eye. It's available in Black, Dark Blue, Light Ivory-Gold, Light Buckskin, Dark Blue-Green and Dark Firethorn. The popular Merlin Plaid comes in Dark Blue-Green or Dark Firethorn. Also available is Manhattan, an elegant velour in Blue and Light Buck-

skin. Interior comfort and beauty are Sedan deVille strengths again this year. (Then, what year haven't they been?) Distinctive simulated Rosewood appliques and laminates highlight the doors and instrument panel. You may specify a power reclining seat for the passenger side.



The Cadillac Sedan deVille in Claret with White padded vinyl roof.



# The Coupe deVille

AMERICA'S FAVORITE LUXURY CAR.

The 1976 Cadillac Coupe deVille is again out front with all the important considerations Americans seem to want most in their luxury cars. That is . . . elegant lines, traditional styling and full-sized responsiveness. What's the secret behind DeVille's popularity? Consistently high resale value,

for one thing. For another, standard features that range from Automatic Climate Control to Power Door Locks. And it's the features you can specify . . . like Cadillac's Electronic-Fuel-Injected Engine, Astrorooftop and an AM/FM Signal-Seeking Stereo Radio with a 24-hour weather band.

For many Coupe deVille buyers, it's the car's interiors that set it apart from other luxury cars. This year's interiors are a good case in point. For example, the Merlin Dark Blue-Green Plaid, shown below, is Cadillac elegance at its best. It is also available in Dark Firethorn. Or, you may choose

from six Magnan ribbed fabrics or 11 different available leather interiors. Also available: Manhattan velour in Blue and Light Buckskin. While you are selecting an interior that is just right for you, consider some of the other items that could add to your Cadillac driving pleasure. Like a Tilt

and Telescope Steering Wheel or Cruise Control . . . which allow you to enjoy your Cadillac ride even more. There's Sunroof, too. It operates like the Astrorooftop except the electrically powered panel is not translucent. A nice way to let the air and sunshine in.



The Cadillac Coupe deVille in Galloway Green Firemist with available White padded Cabriolet roof.



# The Calais

CADILLAC VALUE IN ACTION.

It's true. Whatever you want in a luxury car, Cadillac has it this year. Including attractive values...in the 1976 Calais Coupe and Calais Sedan. These cars epitomize Total Cadillac Value...the value that is inherent in *every* Cadillac. When you buy it, when you drive it, when

you trade it. And these luxury automobiles come with all the most wanted features that you've come to expect from Cadillac: Automatic Climate Control, Quartz Digital Clock, Power Door Locks, Tinted Glass, Lamp Monitors...just to mention a few.

Two kinds of people can appreciate the Calais interiors for 1976—the young and the young-at-heart. For here is the excitement and the elegance of Morgan Plaid. Shown below in Blue-Green/Gray/Black, this bright and vibrant material returns as standard on Calais...because it was so

well received in '75. Morgan Plaid is also available in Black/Gray/Red, Blue/Gray/Black and Red/Gray/Black. Or, if you prefer, you may specify an expanded vinyl interior in either Antique Light Buckskin or Black. But, whichever you choose, it will quickly become obvious that your 1976 Calais

is clearly Cadillac through and through. With a host of features that are standard—such as AM/FM Radio with Power Antenna that automatically rises to a preselected height when you turn on the radio and recedes into the fender when the radio or ignition is turned off.



The Cadillac Calais Coupe in Dunbarton Green with White available padded roof.

The Cadillac Calais Sedan in Academy Gray.



The interiors of the 1976 Limousine and Nine-Passenger Sedan are a thoughtful reflection of the very private world that Cadillac's designers set out to create. A place of luxury and comfort. But also of business. Careful consideration went into the selection of the materials . . . such as the Dark

Blue Medici crushed velour fabric shown below. Needs vary. Tastes differ. That's why Cadillac offers Medici in Black, along with Light Gray Magnan Knit interior. But what separates the Sedan and Limousine from other great luxury cars? Size, certainly. Full-width folding seats allow for three

additional passengers. Convenience. The control panel permits passengers to raise and lower windows, turn on reading lamps, switch on the news or, in the Limousine, raise or lower the driver/passenger partition. Very special cars for people interested in luxury . . . in an executive size.



The Cadillac Limousine in Commodore Blue with padded matching Cross Grain vinyl top.



# *Limousine & Nine-Passenger Sedan* EXECUTIVE SIZE LUXURY.

The choice of 1976, when it comes to interior size and comfort, spaciousness and privacy, is the Cadillac Limousine or Fleetwood Nine-Passenger Sedan. The Cadillac Limousine is still the only American-made car designed and built as a Limousine. And each model

comes with the refinements one might expect in cars of this stature. Like two separate Automatic Climate Control systems—one up front for the driver and another in the back exclusively for passengers. In every way, these are the Flagships of the Cadillac line.



# Standard features

## Seville

**Automatic Climate Control**—Heating/cooling/dehumidifying system maintains temperature you select with a single setting.

**AM/FM Signal-Seeking Stereo Radio**—Seeks out strongest AM, FM or FM stereo stations. Automatic power antenna. Four diagonally opposed speakers.

**Fuel Monitor**—Lights on instrument panel let you know how you are driving—green for efficiently and amber for inefficiently. Red light indicates low fuel level.

**Electronic-Fuel-Injected, 5.7 Litre Engine**—Designed to provide efficiency and other benefits over wide variety of conditions.

**Automatic Level Control**—Automatically adjusts to changing loads to help keep car level.

**Power Door Locks**—Lock doors individually; or lock all doors with master control on driver and front passenger doors.

**Cornering Lights**—Project light from the side of car when turning.

**Variable Ratio Power Steering**—Easy parking, yet retains feel of the road.

**Convenient Power Seat Adjuster**—50/50 front seats have a six-way power seat adjuster for driver and a two-way power seat adjuster and manual seat back recliner for passenger. Controls on door armrests.

**Padded Vinyl Roof**—Cross Grain pattern.

**Steel-Belted, Wide-Whitewall Radial Tires**—Built to GM specifications.

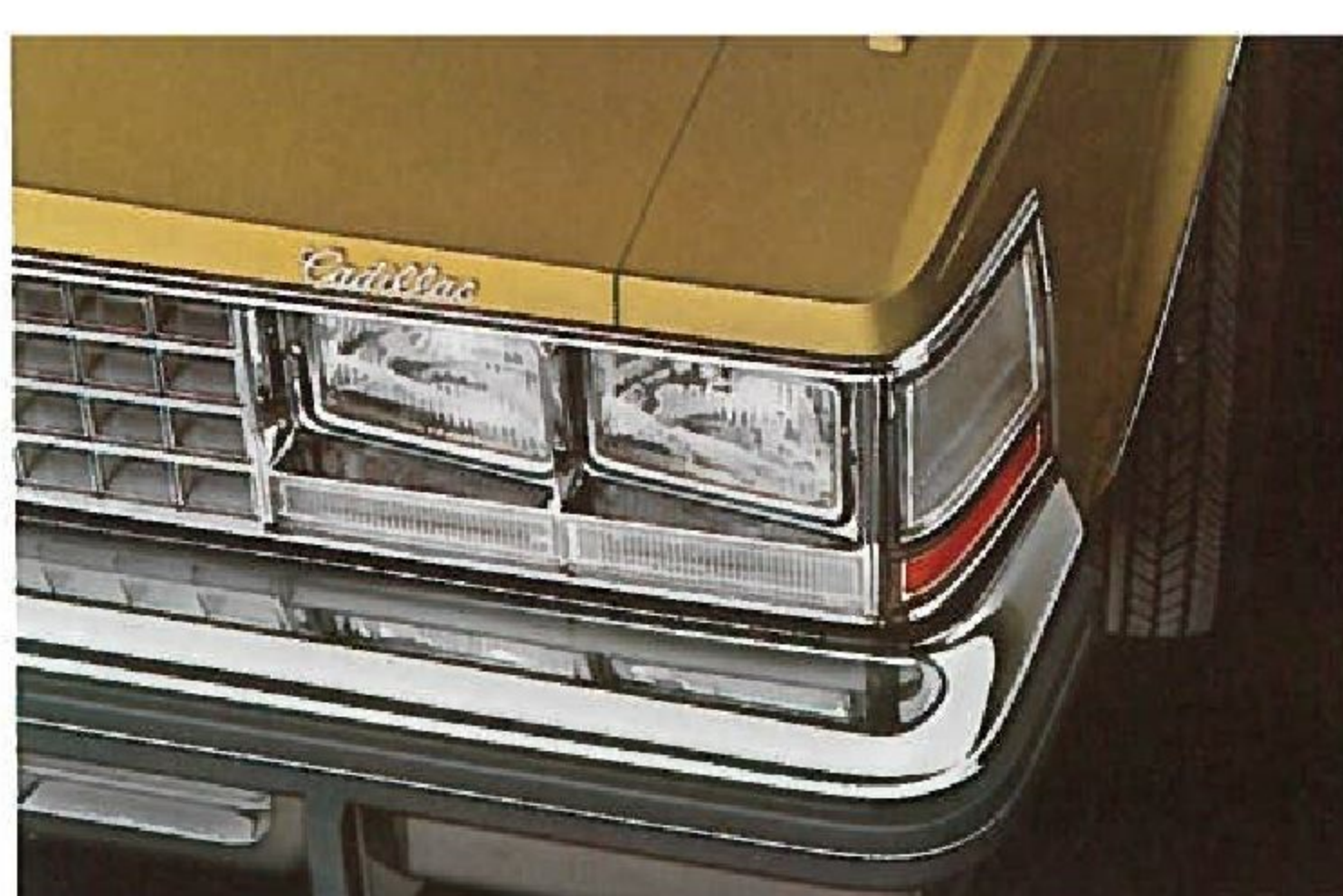
**Tilt and Telescope Steering Wheel**—Tilts up or down, adjusts in or out.

**Controlled Cycle Wiper System**—A delay feature adjusts wiper action for light rain.

**Lamp Monitors**—Show if front and rear lights are functioning.

As well as . . .

Remote Control Left-Side and Right-Side Exterior Rearview Mirrors • Remote Control Trunk Lock Release • Dual Mode Horn • Individual Front Armrests • One-Piece Deep Pile Carpeting • Individual Rear Seat Interior Reading Lamps • Inside Hood Lock Release • Color-Keyed Litter Container • Quartz Digital Clock • Power Windows • Soft Ray Glass • Stowaway Spare Tire • Color-Coordinated Spare Tire Cover and Trunk Carpeting, including Deck Lid • Accent Paint Striping • Assist Straps on Back of Front Seats as well as Overhead Type • Pull-Type Handle on Each Door • Automatic Storing of Safety Belts • Bumper Impact Strips • Dome Courtesy and Reading Lamp • Cigar Lighters • Turbo Hydra-Matic Transmission • High Energy Ignition • Automatic Parking Brake Release



Lamp Monitors and Cornering Lights.



AM/FM Signal-Seeking Stereo Radio.



Power Door Locks and Seat Adjuster on Driver's Armrest.



Automatic Climate Control, Tilt/Telescope Steering Wheel.



Vinyl Cross Grain Padded Roof.



Fully Carpeted Trunk to hold this much luggage.

## Cadillac and Eldorado

**Space-Age Instrument Panel**—Information band groups fuel gauge, digital clock and warning lights on upper panel . . . more immediate functions over the steering column.

**Automatic Climate Control**—Heating/cooling/dehumidifying system maintains the temperature you select. "Economy" setting for improved efficiency.

**High Energy Ignition System**—Eliminates points, ignition condenser, cam and rubbing block.

**Power Door Locks and Power Windows**—Master control for windows at driver's position. Lock doors individually; or lock all doors with master control at driver and front passenger positions.

**AM/FM Radio with Automatic Power Antenna**—Standard on DeVilles, Calais and Limousine.

**AM/FM Signal-Seeking Stereo Radio with Power Antenna**—Standard on Fleetwood Brougham and Eldorado. Diagonally opposed speakers.

**Lamp Monitors**—Show if major or secondary light systems are functioning.

**Six-Way Power Seat Adjuster**—Adjusts front seats forward, back, up, down and tilts forward or back. (Except Calais and Limousine.)

**Dual Comfort Seats**—(60/40 version standard on Fleetwood Brougham; available on DeVilles and Eldorado.) Allow separate adjustment for driver and front passenger. Available for the passenger's side is a power reclining seat with a six-way power adjuster.

**Steel-Belted Radial Tires**—Built to GM specifications.

**Driver and Front Passenger Reading Lights**—Standard on Fleetwood Brougham.

**Soft Ray Glass**—All models.

**Variable Ratio Power Steering**—Easy parking and cornering, while retaining a feel of the road. (Not on Limousine.)

**Three-Speed Wipers and Washers**—"Mist" position for single-wipe action.

**Automatic Parking Brake Release**—All models.

**Quartz Digital Clock**—All models.

**Automatic Level Control**—All models except DeVilles and Calais.

**Hinged Door Pull Handles**—On all models except Calais.

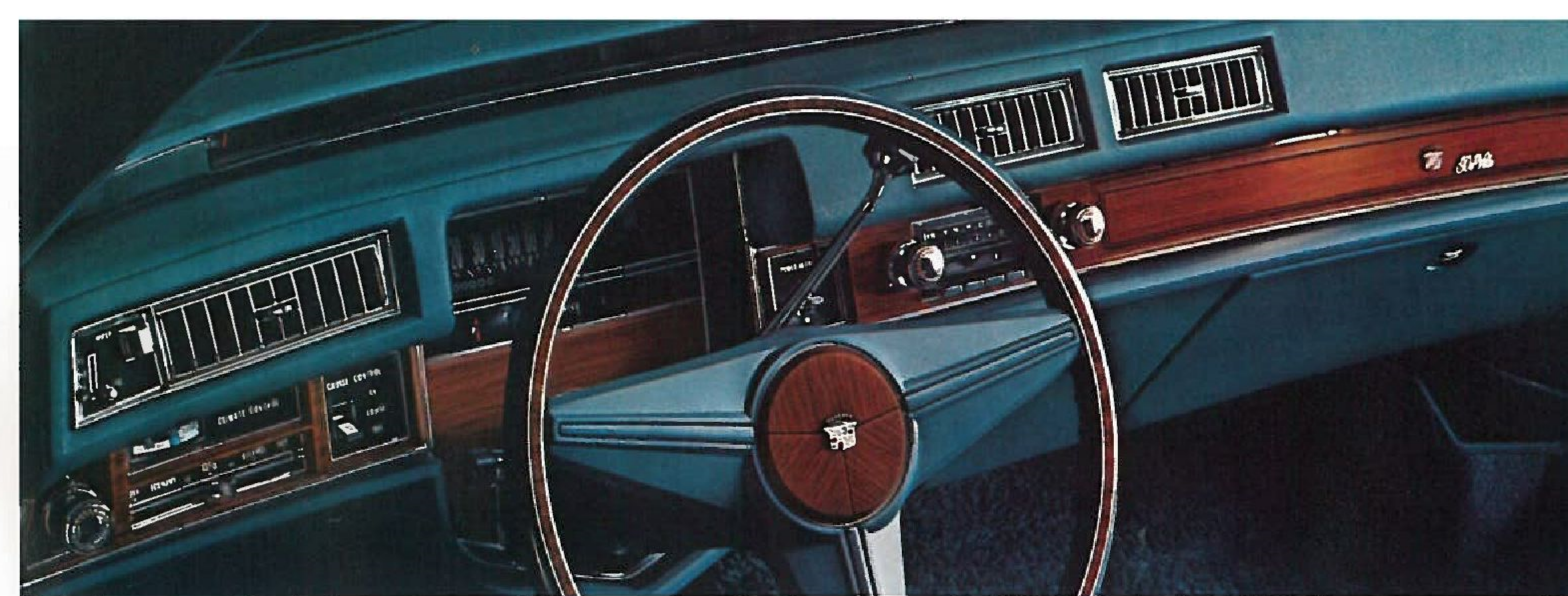
**Remote Control Left-Side Mirror**—(All models.) On Limousine, right-side mirror is standard as well.

**Litter Container**—Color-keyed to interior.

**Dual Master Cylinder Brake System with Disc Brakes in Front**—Four-wheel disc brakes on Eldorado.

As well as . . .

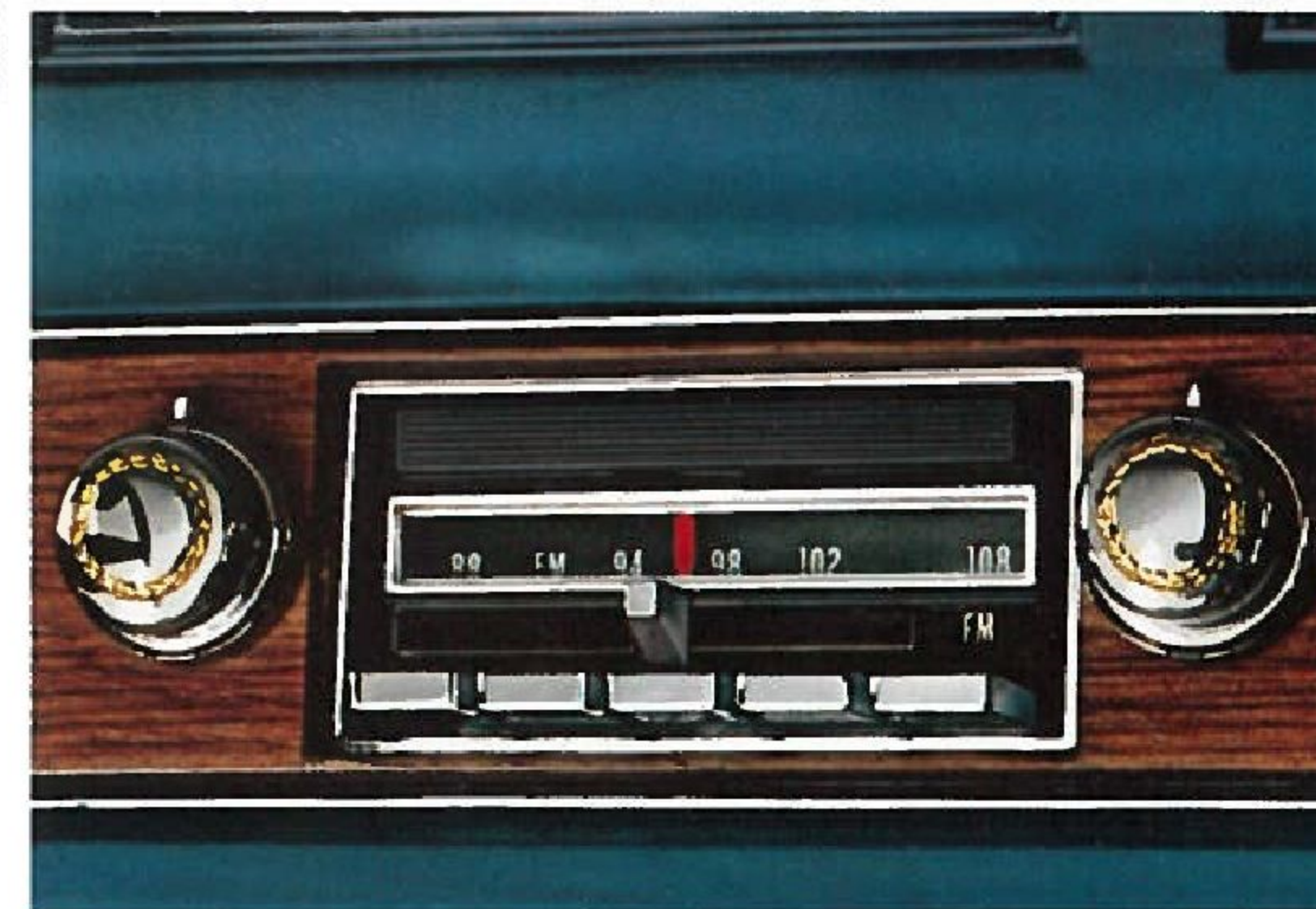
• Center Armrests • Turbo Hydra-Matic Transmission • Visor Vanity Mirror • Cigar Lighters



Space-Age Instrument Panel.



Roomy Trunk.



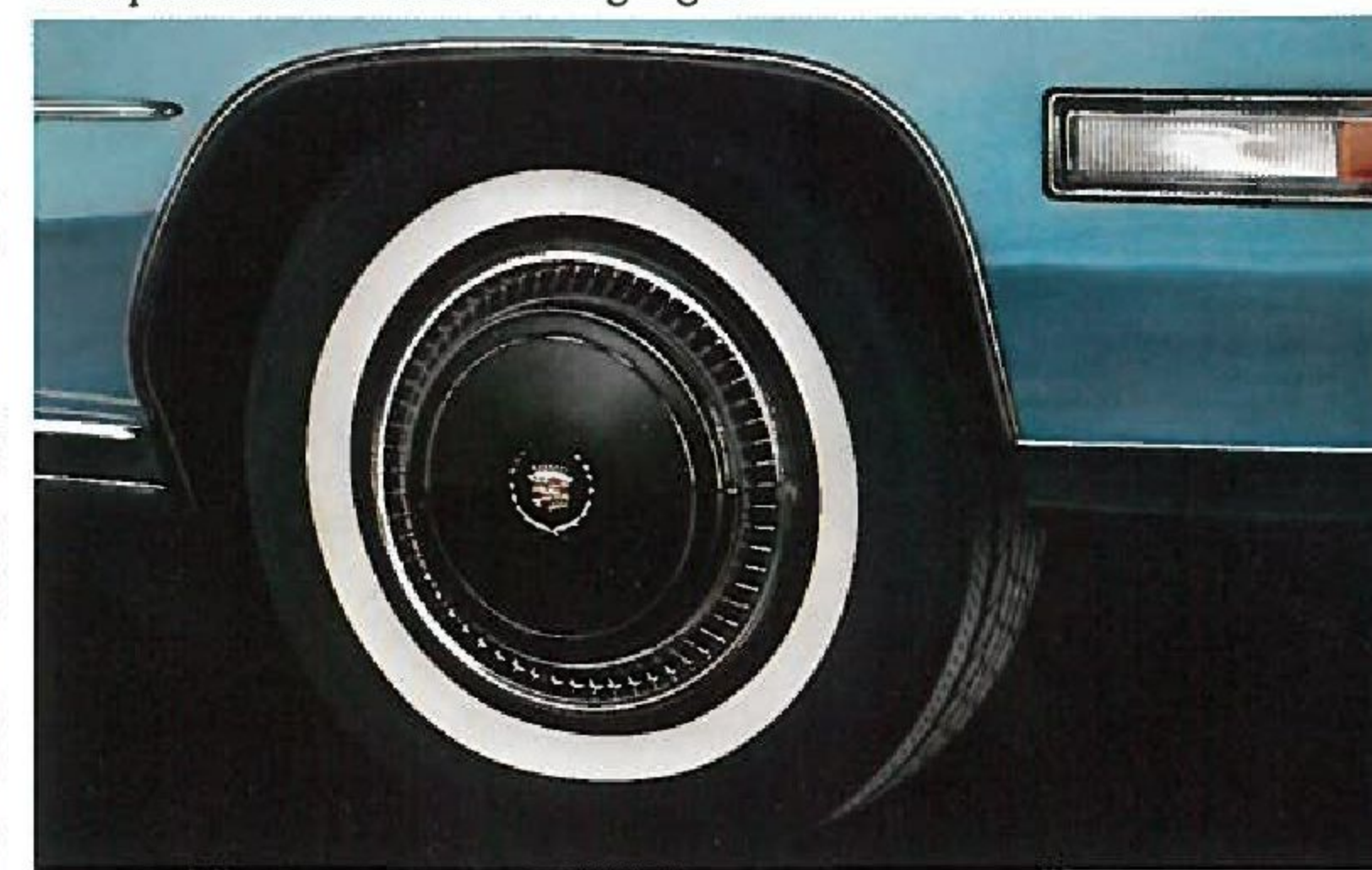
AM/FM Radio. (Signal-Seeking Stereo Radio on Brougham and Eldorado).



Automatic Climate Control.



Lamp Monitors and Cornering Lights.



## Special Editions

Here in Cadillac special edition cars is a further expression of luxury of choice in action...a delightful way to express your individuality.



Talisman console opened.

**Brougham d'Elegance.** This edition offers a new concept in automotive seating luxury—Cadillac Contoured Pillow Seats. (Similar to upper right photo.) The Brougham d'Elegance seats are trimmed in handsome Mansion Knit, available in Light Gray, Black, Dark Blue, Dark Blue-Green and Light Buckskin. Other luxury touches include Mansion-trimmed seat back storage pockets, deep pile carpeting, turbine vane wheel discs, opera lamps, 50/50 Dual Comfort front seats, padded Elk Grain vinyl roof and brushed chrome door mouldings.



Contoured Pillow Seat on d'Elegance.



Opera light on DeVille d'Elegance Coupe.

**DeVille d'Elegance.** A new expression of comfort—Cadillac Contoured Pillow Seating—is featured in this luxury combination for both Sedan DeVille and Coupe DeVille. Here it is trimmed in Magnan, a ribbed knit available in Black, Dark Blue, Dark Blue-Green and Light Buckskin, shown above. Starting with distinctive see-through stand-up crest, this is a car of true elegance...with opera lights on the Coupe. Plus...accent striping on the hood, sides and rear deck, deep pile carpeting and 50/50 Dual Comfort front seats.

**Cabriolet.** Both the Coupe DeVille and Coupe DeVille d'Elegance are available with the Cabriolet roof. This dramatic vinyl roof design highlights a chrome accent strip, as well as a see-through stand-up crest on the hood.

## Features Available

### Cadillac and Eldorado

**Electronic-Fuel-Injected Engine**—It is designed to provide efficiency over a wide variety of driving conditions and driver habits—with quick response, fast starting, consistent performance, smooth engine idle and few required maintenance operations. (Except Limousine.)

**Weather Band Radio**—AM/FM Signal-Seeking Stereo Radio with a 24-hour weather band.

**Door Lock System**—Locks all doors automatically when the shift lever is moved to a forward drive position.

**Astrorooft**—Laminated and tinted safety glass panel lets the sunshine in even when closed—or keeps it out by sliding an adjustable sun shade. Or lets the air in with the power operated switch. All models except Convertible and Limousine.

**Sunroof**—Operates like the Astrorooft except the electrically powered panel is not translucent.

**Theft-Deterrent System**—Sounds horn and flashes exterior lights when security of the interior, engine or trunk compartments is violated.

**Illuminated Entry System**—Pushing front door handle button illuminates door lock cylinder and inside courtesy lights. The lights go off when the ignition is turned on.

**Illuminated Vanity Mirror**—Visor mirror on the passenger side illuminates when cover is raised.

**Fuel Monitor System**—Color-coded lights on the instrument panel indicate when fuel consumption rate is efficient or inefficient—and when the fuel supply is low.

**Stereo with Tape Player**—Cadillac's AM/FM Push-Button Stereo Radio with Integral 8-Track Tape Player. Four diagonally opposed speakers.

**Power Recliner Seats**—Available for passenger seat on all models with 50/50 Dual Comfort front seats. Power recliner for passenger seat is included as part of the Fleetwood Talisman.

**Opera Lamps**—Available on Fleetwood Brougham, Limousines, Coupe DeVille and Calais Coupe.

**Wheel Discs**—Available are wire wheel discs, as shown. Also a new disc with a black hub and an argent and chrome turbine vane wheel disc. (Except Eldorado.)

**Cruise Control**—Maintains a selected speed without using the accelerator pedal.

**Electric Rear Window Defogger**—Except Limousine.

**Air Cushion Restraint System**—Not available on Convertible and Limousine.

**Manual Recliner**—For driver seat on all models with 50/50 Dual Comfort seats.

**Track Master Skid-Control**—Computerized system that automatically prevents rear wheel lock-up during severe braking situations. (Except Eldorado.)

**Twilight Sentinel**—Automatically turns driving lights on and off in response to light conditions.

**Guide-Matic Headlamp Control**—Automatically dims lights with approach of oncoming cars...and then returns lights to bright.

**Controlled Cycle Wipers**—Delay feature adjusts wiping action for light rain or other conditions.

**Trailer Package**—Heavy-duty equipment grouping for towing up to 6,000 lbs. (Except Limousine.)

**Controlled Differential**—Directs power to the rear wheel having better traction. (Except Eldorado.)

**Automatic Level Control**—(Standard on Fleetwood series.) Automatically adjusts to changing loads.

**Remote Control Trunk Lock & Electric Pulldown**—A control button inside the glove compartment automatically releases the trunk lid lock.

**Tilt and Telescope Steering Wheel**—Swings up for easy entry-exit. Also slides and adjusts in or out.

**Leather Interiors**—11 trim combinations. (Standard on Convertible.)

**Remote Control Right-Side Mirror**—Standard on Limousine.

**Outside Thermometer**—Mounted on base of left-side mirror.

**Firemist Paints**—High metallic paints known for richness of color.

**Carpeted Floor Mats**—Seven coordinating colors.

### Seville

Astrorooft.

Sunroof.

Illuminated Vanity Mirror.

Illuminated Entry System.

Wire Wheel Discs or Turbine Vane

Wheel Discs.

Cruise Control.

Theft-Deterrent System.

Also Available:

AM/FM Stereo Radio with Integral

8-Track Tape Player • Controlled

Differential • Door Edge Guards

• Firemist Paint • Carpeted Floor Mats

• Guide-Matic Headlamp Control

• Twilight Sentinel • Heavy-Duty

Cooling System • Leather Upholstery

• License Frames • Electric Rear

Window Defogger • Trunk Mat

• Performance Axle • Trailing

Package • Automatic Door Locks • 6-

Way Passenger Power Seat Adjuster

• Power Recliner Passenger Seat

• Manual Recliner Driver Seat • Ac-

cessory Engine Block Heater (dealer

installed) • Rear Shoulder Belts

(dealer installed)



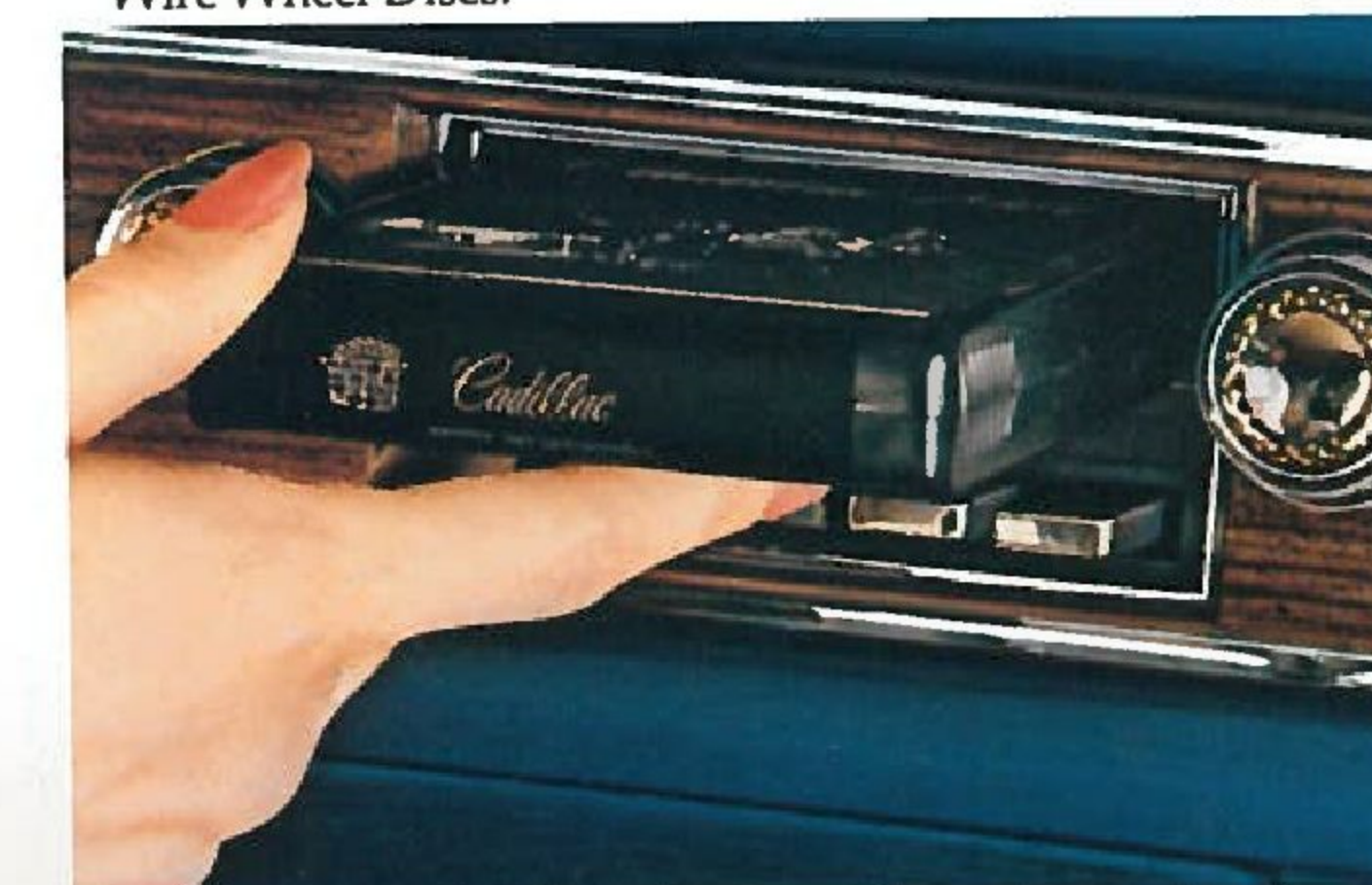
Astrorooft from the outside in . . . . . and from the inside out.



Wire Wheel Discs.



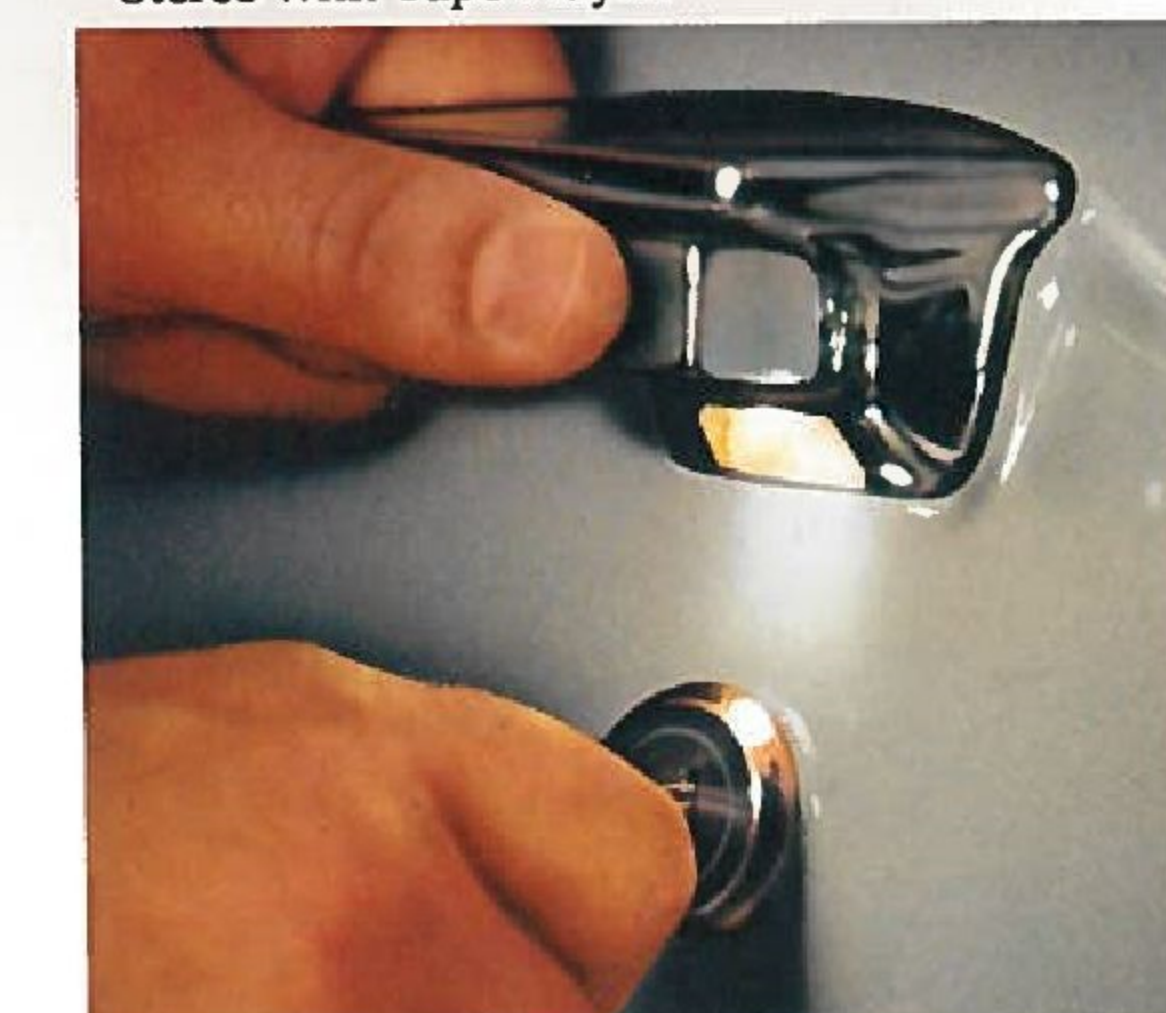
Power Recliner Seat.



Stereo with Tape Player.



Theft-Deterrent System.



Illuminated Vanity Mirror.

# Specifications

## Cadillac and Eldorado

**Engine**  
8-Cylinder, 90° V-Type  
Bore .....4.300  
Stroke .....4.304  
Displacement .....500 cubic inches (8.2 litres)  
Compression Ratio .....8.50 to 1  
Firing Order .....1-5-6-3-4-2-7-8  
Mounts .....3 points, rubber insulated  
Emission Controls .....Positive Crankcase Ventilation, Air Injector Reactor, Exhaust Gas Recirculation w/exhaust pressure transducer, Early Fuel Evaporation, Evaporative Control

Note: Air Injector Reactor System and exhaust pressure transducer utilized on California and EFI cars only.

**Fuel System**  
Carburetion System .....4V "Quadrajel"  
Fuel Filter .....In fuel pump & in fuel tank  
Pump .....Mechanical, in-line

Note: The 1976 Cadillac engine is designed to operate only on unleaded gasoline of 91 Research Octane. The gasoline should also have at least a Motor Octane of 83. Unleaded gasoline is essential for proper emission control system operation, and it will reduce spark plug fouling. The use of leaded gasoline can severely minimize the effectiveness of the emission control system and result in the loss of warranty coverage.

**Fuel Injection System**  
Type .....Speed-density, port injection  
Delivery .....Time, 2-phase, 4 cyl. each phase  
Filter .....In-line, 20 micron  
Pumps .....2 electric (in-line, in-tank)

**Fuel Tank**  
Capacity .....27.5 gallons (approx.)  
Emission Controls (For Vapor Control) . . .Fuel tank vented through charcoal canister

**Electrical**  
Freedom Battery . . .12 volt, negative ground, 3500-watt, 66 plates, side terminals. No filler/vent caps  
Generator .....63 amp., 80 amp. on Limousine  
Voltage Regulator .....Solid state, integral with generator

Ignition . . .HEI with 8-mm silicone insulated wiring

**Transmission**  
Except Eldorado ..... "400 Series," 3-speed Turbo Hydra-Matic  
Eldorado ..... "425 Series," 3-speed Turbo Hydra-Matic for front-wheel drive

**Propeller (Drive) Shaft**—Except Eldorado . . .Front and rear constant velocity joints. Limousine has additional center constant velocity joint

**Rear Axle Differential** .....Hypoid type with ring gear

Ratio—Standard . . .2.73 to 1—Except Limousine—Available . . .3.15 to 1—Standard Limousine Available Controlled Differential . . .Clutch type  
**Final Drive (Eldorado)** .....Spiral bevel type  
Ratio—Standard . . .2.73 to 1—Available . . .3.07 to 1

**Front Suspension** .....Upper and lower suspension arms  
Springs .....Coil (torsion bars on Eldorado)  
Steering Knuckle .....Integral knuckle, arm and caliper support; integral hubs and rotors on spindles (except Eldorado). Separate hub and rotor on Eldorado  
Bearings .....Tapered roller  
Stabilizer Bar .....Rod and link type  
Spherical (Ball) Joints .....Wear indicator on lower joints

Shock Absorbers .....Hydraulic double action  
**Rear Suspension** . . .Four-link drive—coil spring  
Springs .....Coil  
Shock Absorbers .....Hydraulic double action  
Height Control .....Automatic Level Control (except Calais & DeVille)

**Brakes**—Except Eldorado .....Disc—drum self-adjusting

Master Cylinder .....Dual hydraulic  
Power Booster—  
Except Limousine & Commercial . . .Tandem vacuum

Limousine & Commercial . . ."Hydro-Boost" unit correlated with power steering pump  
Combination Valve .....Front metering valve, pressure differential switch, rear proportioning valve

Front .....Ventilated discs  
Caliper .....Single piston sliding  
Rear .....Duo servo drums  
Drums .....12" finned cast iron  
Lining Material (Front & Rear) . .Molded asbestos  
Swept Area (Total) .....428.5 sq. in.  
Parking Brake . .Silent action with vacuum release  
Action .....Mechanical on rear brakes  
Telltale Light . . .Indicates hydraulic malfunction or parking brake applied

Linings .....Audible wear indicators

**Brakes**—Eldorado . . .Disc—disc self-adjusting  
Master Cylinder .....Dual hydraulic  
Power Booster . . ."Hydro-Boost" unit correlated with power steering pump

Combination Valve . .Pressure differential switch, rear proportioning valve

Front & Rear . . .Single piston sliding calipers, ventilated discs

Swept Area (Total) .....448 sq. in.  
Lining Material (Front & Rear) . .Molded asbestos  
Parking Brake . .Silent action with vacuum release  
Action .....Mechanical on rear caliper  
Telltale Light . . .Indicates hydraulic malfunction or parking brake applied

Linings .....Audible wear indicators

**Steering** .....Variable Ratio Power (Constant Ratio on Limousine)  
Damper—Eldorado Only .....Hydraulic shock absorber

Overall Ratio  
Calais, DeVille, Brougham .....17.8 to 9.1  
Eldorado .....20.0 to 17.7  
Limousine .....19.5

**Frame** .....Perimeter type with heavy gauge boxed side rails

**Wheels & Tires**  
Tires .....GM Specification Steel-Belted Radial  
Sidewall—Except Limousine . . .Wide white stripe  
Limousine .....White stripe  
Size—Except Limousine . . .LR 78-15-B  
Limousine . . .LR 78-15-D  
Wheels—Except Limousine . . .15 x 6J/K  
Limousine . . .15 x 6J/K Heavy duty

**Headlamps** .....4 Rectangular

**Cornering Lamps** . . .Integral with side marker lamps

**Lamp Monitors** .....Standard front and rear

**Overall Sizes**  
Tread Width—Except Eldorado Front & rear—63.3"  
Eldorado .....Front 63.7", rear 63.6"  
Wheelbase  
Calais, DeVille .....130.0"  
Fleetwood Brougham .....133.0"  
Limousine .....151.5"  
Eldorado .....126.3"

**Overall Lengths**  
Calais, DeVille .....230.7"  
Fleetwood Brougham .....233.7"  
Limousine .....252.2"  
Eldorado .....224.1"

**Overall Heights**  
Fleetwood Brougham .....55.3"  
Calais and DeVille Sedans .....54.3"  
Calais and DeVille Coupes .....53.8"  
Nine-Passenger Sedan .....57.4"  
Limousine .....57.2"  
Eldorado Coupe .....54.1"

**Shipping Weights**  
Fleetwood Brougham .....5213 lbs.  
Calais Coupe .....4989 lbs.  
Calais Sedan .....5083 lbs.  
Coupe deVille .....5025 lbs.  
Sedan deVille .....5127 lbs.  
Eldorado Coupe .....5085 lbs.  
Eldorado Convertible .....5153 lbs.  
Nine-Passenger Sedan .....5746 lbs.  
Limousine .....5889 lbs.

## Safety Features

### Occupant Protection

Seat belts with push-button buckles for all passenger positions  
Two front combination seat and shoulder belts for driver and right front passenger (with reminder light, buzzer and inertia reel)  
Energy-absorbing steering column  
Passenger guard door locks  
Safety door latches and hinges  
Folding seat back latches

Energy-absorbing padded instrument panel and front seat back tops  
Contoured windshield header (except Convertible)  
Thick laminate windshield  
Safety armrests  
Safety steering wheel  
Cargo Guard (except Limousine)  
Contoured roof inner panel (except Convertible)  
Glove box and console door latch impact security  
Smooth contoured door and window regulator handles  
Soft, low-profile coat hooks  
Automatic locking front and rear outboard seat belt retractors  
Shoulder belt anchorages for rear seat outboard occupants  
Pressure lock radiator cap  
High-strength front seat anchorages and construction  
High-strength rear seat retention  
Stamped steel door hinges  
Air Cushion Restraint System for front seat occupants (available at extra cost on all models except Limousine and Eldorado Convertible)

**Accident Prevention**  
Side marker lights and reflectors  
Parking lamps that illuminate with headlamps  
Four-way hazard warning flasher  
Backup lights  
Lane change feature in direction signal control  
Windshield defrosters, washer and three-speed wipers  
Wide-view inside day/night mirror (vinyl edged, shatter resistant glass and deflecting support)  
Outside rearview mirror  
Dual master cylinder brake system with warning light  
Starter safety system (mechanical lockout)  
Dual action safety hood latches  
Headlamp aiming access provision  
Low-glare instrument panel top, inside windshield moldings, wiper arms and blades and steering wheel metallic surfaces  
Safety wheel rims  
Uniform shift quadrant  
No-winged wheel nuts, discs and caps  
Front disc brakes with audible wear indicators  
Self-adjusting brakes  
Illumination of windshield wiper and washer, heater/air conditioning and defroster controls  
Pressure relief gas cap

**Anti-theft**  
Anti-theft ignition key reminder buzzer  
Anti-theft steering column lock  
Anti-theft key system (one key for ignition only, other key for glove compartment, doors and trunk)  
Visible vehicle identification  
Tamper-resistant odometer with telltale feature

## Seville

**Engine**  
8-Cylinder, 90° V-Type  
Bore .....4.057  
Stroke .....3.385  
Displacement .....350 cubic inches (5.7 litres)  
Compression Ratio .....8.0 to 1  
Firing Order .....1-8-4-3-6-5-7-2  
Mounts .....3 points, rubber insulated  
Emission Controls .....Positive Crankcase Ventilation, Air Injector Reactor, Exhaust Pressure Transducer, Exhaust Gas Recirculation

Lubrication . . .Full-pressure, full-flow oil filter

### Fuel System

Induction System . . .Cadillac Electronic Fuel Injection  
Type .....Speed-density, port-injected  
Delivery .....Timed, 2-phase, 4 cylinders each  
Filter .....In-line, 20 micron  
Pumps .....2 electric (1 in-line, 1 in-tank)

Note: The Cadillac Seville engine is designed to operate only on unleaded gasoline of at least 91 Research Octane. The gasoline should also have a Motor Octane of at least 83. Unleaded gasoline is essential for proper emission control system operation, and it will reduce spark plug fouling. The use of leaded gasoline can severely reduce the effectiveness of the emission control system.

**Fuel Tank**  
Capacity .....21 gallons (approx.)  
Emission Controls (For Vapor Control) . . .Domed fuel tank, charcoal canister

### Electrical

Battery .....12 volt, negative ground Freedom™ Battery, 3500-watt, sealed top, side terminal, no filler/vent caps, 90 plates  
Generator .....80 amp  
Voltage Regulator .....Solid state, integral with generator

Ignition . . .HEI with 8-mm silicone wiring

**Transmission** ..... "400 series" 3-speed Turbo Hydra-Matic

**Propeller (Drive) Shaft** . . .Rear has constant velocity joint, front of shaft is a single "U" joint

**Rear Axle** . . .Salisbury type with 8½" ring gear  
Ratio—Standard . . .2.56 to 1—Optional . . .3.08 to 1  
Optional Controlled Differential . . .Clutch type

**Front Suspension** . . .Unequal length upper & lower suspension arms

Springs .....Coil  
Steering Knuckle .....Integral knuckle, arm & caliper support, integral hubs & rotors on spindles

Bearings .....Tapered roller  
Stabilizer Bar .....1" diameter, rod & link  
Spherical (Ball) Joints . . .Wear indicator on lower joints

Shock Absorbers . . .Hydraulic double action

**Rear Suspension** . . .Multiple leaf spring  
Stabilizer Bar .....¾" diameter, rod & link

Shock Absorbers . . .Hydraulic double action  
Height Control .....Automatic Level Control

**Brakes** . . .Disc—drum self-adjusting  
Master Cylinder .....Dual hydraulic  
Power Brake Booster . . .8" dual diaphragm vacuum  
Combination Valve .....Front metering valve, pressure differential switch, & rear proportioning valve

Front .....Ventilated discs  
Caliper .....Single piston floating  
Rear .....Duo-servo drum  
Drums .....11" finned cast iron  
Lining Material (Front & Rear) . .Molded asbestos  
Swept Area (Total) .....350.8 sq. in.  
Parking Brake . .Silent action with vacuum release  
Action .....Mechanical on rear brakes  
Telltale Light . . .Indicates hydraulic malfunction or parking brake applied

Linings .....Audible wear indicators

**Steering** .....Variable Ratio Power  
Damper .....Hydraulic shock absorber  
Overall Ratio .....16.4-13.8  
Wheel & Column . . .Tilt & Telescoping

### Wheels & Tires

Tires .....GM Specification Steel-Belted Radial  
Sidewall .....Wide whitewall  
Size .....GR 78-15B  
Spare .....G78-15B Stowaway  
Wheels .....15 x 6 JJ

**Headlamps** .....Rectangular

**Cornering Lights** . . .Front fender integral with side marker

**Lamp Monitors** .....Standard front & rear

**Overall Sizes**  
Tread Width .....61.3 front, 59.0 rear  
Wheelbase .....114.3"  
Overall Length .....204.0"  
Overall Width .....71.8"  
Overall Height .....54.7"  
Shipping Weight (Less Options) . . .4232 pounds

### Noise & Vibration Features

Steering Linkage Damper (Hydraulic Shock Absorber)  
Sheet Metal Dampers (Hydraulic Shock Absorbers)  
Isoflex Body Mounts  
Transmission Rear Support Lateral Strut Rod  
Propeller Shaft Tunnel Strap  
Rear Leaf Spring Dampers  
Insulated Fuel Line Retainers

## Safety Features

### Occupant Protection

Seat belts with push-button buckles for all passenger positions  
Two front seat lap-shoulder belt combination for driver and right front passenger (with reminder light and chimes and inertia reel)  
Energy-absorbing steering column  
Passenger guard door locks  
Safety door latches and hinges  
Energy-absorbing padded instrument panel and front seat back tops

Contoured windshield header  
Thick laminate windshield  
Safety armrests  
Safety steering wheel  
Cargo Guard  
Contoured roof inner panel  
Glove box door latch impact security  
Smooth contoured door handles  
Soft, low-profile coat hooks and dome lamp  
Automatic locking front and rear outboard seat belt retractors  
Shoulder belt anchorages for rear seat outboard occupants  
Pressure lock radiator cap  
High-strength front seat anchorages and construction  
High-strength rear seat retention  
Stamped steel door hinges

### Accident Prevention

Side marker lights and reflectors  
Parking lamps that illuminate with headlamps  
Four-way hazard warning flasher  
Backup lights  
Lane change feature in direction signal control  
Windshield defrosters, washer and three-speed wipers  
Wide-view inside day/night mirror (vinyl-edged, shatter-resistant glass and deflecting support)  
Outside rearview mirror  
Dual master cylinder brake system with warning light  
Starter Safety System (mechanical lockout)  
Dual action safety hood latches  
Headlamp aiming access provision  
Low-glare instrument panel top, inside windshield moldings, wiper arms and blades and steering wheel metallic surfaces  
Safety wheel rims  
Uniform shift quadrant  
No-winged wheel nuts, discs and caps  
Front disc brakes with audible wear indicators  
Self-adjusting brakes  
Illumination of windshield wiper and washer, heater/air conditioning and defroster controls  
Pressure relief gas cap

### Anti-theft

Anti-theft ignition key reminder buzzer  
Anti-theft steering column lock  
Inside hood latch release  
Anti-theft key system (one key for ignition only, other key for glove compartment, doors and trunk)  
Visible vehicle identification  
Tamper-resistant odometer with telltale feature

Cadillac Motor Car Division of General Motors Corporation reserves the right to make changes at any time, without notice, in prices, colors, materials, equipment, specifications and models and also to discontinue models.

  
CADILLAC MOTOR CAR DIVISION  
GENERAL MOTORS CORPORATION



Shown on the cars described in this catalog are some of the many features and accessories offered by Cadillac. Many of these features and accessories are available at extra cost and well worth it in added driving comfort and convenience.



**NODELL CADILLAC, INC.**  
**5200 N. Port Washington Rd.**  
**MILWAUKEE, WISCONSIN 53217**